

Courtesy Of Robby Halabi Of Rimrock Real Estate

\$198,000 - 11516 139 Avenue, Edmonton

MLS® #E4431452

\$198,000

3 Bedroom, 1.5 Bathroom, 1,021 sqft
Condo / Townhouse on 0.00 Acres

Carlisle, Edmonton, AB

Welcome to Glamorgan Estates – A Hidden Gem in Family-Friendly Carlisle! Located in the heart of Castledowns, this beautifully maintained townhome is part of a well-kept complex with recent updates including a newer roof, siding, windows, and crisp white vinyl fencing. Step inside to find a bright and inviting living room, a warm oak kitchen, 3 spacious bedrooms, and 1.5 bathrooms – perfect for families or savvy investors. Enjoy your own private, fenced yard, and the convenience of an assigned parking stall. Just minutes from the YMCA, schools, parks, shopping, and public transit, this home offers both comfort and convenience in a fantastic location. Whether you're a first-time buyer or looking for a great investment opportunity, this property is a must-see!

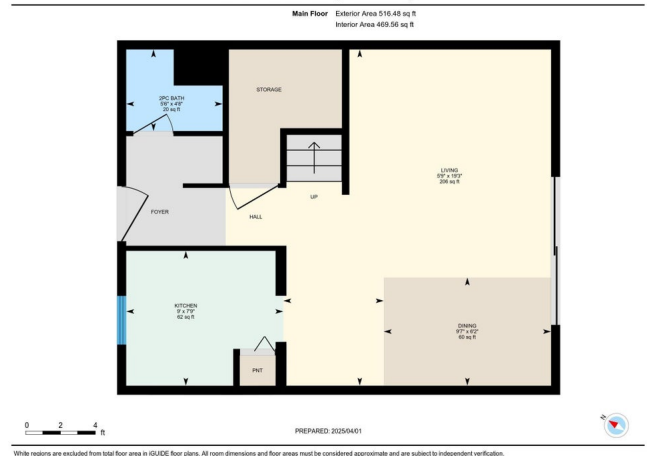
Built in 1977

Essential Information

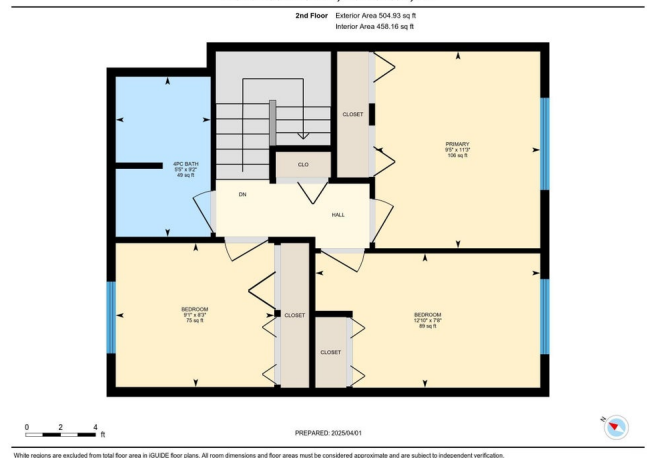
MLS® #	E4431452
Price	\$198,000
Bedrooms	3
Bathrooms	1.50
Full Baths	1
Half Baths	1
Square Footage	1,021
Acres	0.00



11516 139 Ave NW, Edmonton, AB



11516 139 Ave NW, Edmonton, AB



Year Built	1977
Type	Condo / Townhouse
Sub-Type	Townhouse
Style	2 Storey
Status	Active

Community Information

Address	11516 139 Avenue
Area	Edmonton
Subdivision	Carlisle
City	Edmonton
County	ALBERTA
Province	AB
Postal Code	T5X 3L4

Amenities

Amenities	No Animal Home, No Smoking Home
Parking	Stall

Interior

Appliances	Dryer, Hood Fan, Refrigerator, Stove-Electric, Washer
Heating	Forced Air-1, Natural Gas
Stories	2
Has Basement	Yes
Basement	Full, Unfinished

Exterior

Exterior	Wood, Vinyl
Exterior Features	Fenced, Playground Nearby, Public Transportation, Schools, Shopping Nearby
Roof	Asphalt Shingles
Construction	Wood, Vinyl
Foundation	Concrete Perimeter

Additional Information

Date Listed	April 16th, 2025
Days on Market	4
Zoning	Zone 27
Condo Fee	\$405

DATA IS DEEMED RELIABLE BUT IS NOT GUARANTEED ACCURATE BY THE REALTORS® ASSOCIATION OF EDMONTON. COPYRIGHT 2025 BY THE REALTORS® ASSOCIATION OF EDMONTON. ALL RIGHTS RESERVED. Trademarks are owned or controlled by the Canadian Real Estate Association (CREA) and identify real estate professionals who are members of CREA (REALTOR®, REALTORS®) and/or the quality of services they provide (MLS®, Multiple Listing Service®)

Listing information last updated on April 19th, 2025 at 10:02pm MDT