

\$549,998 - 22930 96a Avenue, Edmonton

MLS® #E4431188

\$549,998

3 Bedroom, 2.50 Bathroom, 1,849 sqft

Single Family on 0.00 Acres

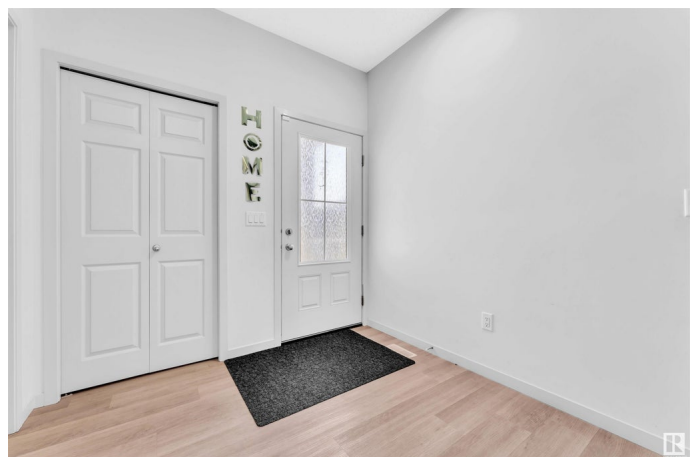
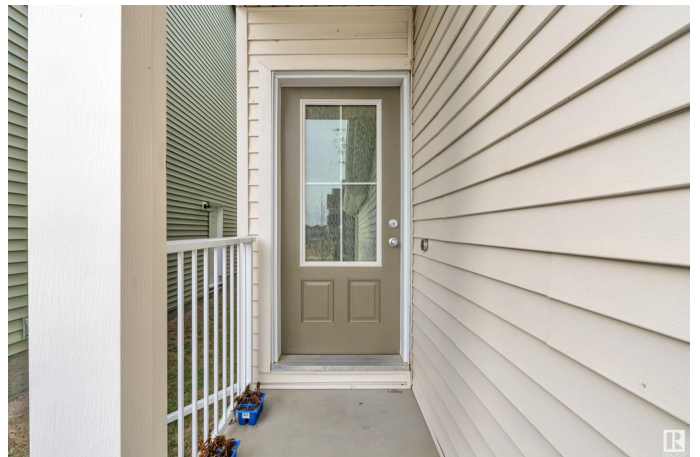
Secord, Edmonton, AB

Beautiful Detached Home with double car garage Nestled in the highly sought-after neighbourhood of Secord, this home epitomizes modern living with its clean lines + efficient layout. upon entrance on main floor you will find mudroom, half bath, living area, dining nook, kitchen & pantry. Upper level you will find bonus room , primary bedroom with W/I Closet & ensuite, 2 more bedrooms & common bathroom. Laundry room on upper level. Unfinished Basement with separate entrance is ready for your personal finishes. Located right off Anthony Henday, within minutes drive to Whitemud Drive, Stony Plain Road, Lewis Farms Transit Centre, Misericordia Community Hospital, schools, shopping, golf, and parks.

Built in 2021

Essential Information

| | |
|----------------|-----------|
| MLS® # | E4431188 |
| Price | \$549,998 |
| Bedrooms | 3 |
| Bathrooms | 2.50 |
| Full Baths | 2 |
| Half Baths | 1 |
| Square Footage | 1,849 |
| Acres | 0.00 |



| | |
|------------|------------------------|
| Year Built | 2021 |
| Type | Single Family |
| Sub-Type | Detached Single Family |
| Style | 2 Storey |
| Status | Active |

Community Information

| | |
|-------------|------------------|
| Address | 22930 96a Avenue |
| Area | Edmonton |
| Subdivision | Secord |
| City | Edmonton |
| County | ALBERTA |
| Province | AB |
| Postal Code | T5T 7R3 |

Amenities

| | |
|-----------|------------------------|
| Amenities | Ceiling 9 ft. |
| Parking | Double Garage Attached |

Interior

| | |
|-------------------|---|
| Interior Features | ensuite bathroom |
| Appliances | Dishwasher-Built-In, Dryer, Refrigerator, Stove-Gas, Washer |
| Heating | Forced Air-1, Natural Gas |
| Stories | 2 |
| Has Basement | Yes |
| Basement | Full, Unfinished |

Exterior

| | |
|-------------------|--------------------------|
| Exterior | Wood, Vinyl |
| Exterior Features | Schools, Shopping Nearby |
| Roof | Asphalt Shingles |
| Construction | Wood, Vinyl |
| Foundation | Concrete Perimeter |

Additional Information

| | |
|----------------|------------------|
| Date Listed | April 16th, 2025 |
| Days on Market | 8 |
| Zoning | Zone 58 |

DATA IS DEEMED RELIABLE BUT IS NOT GUARANTEED ACCURATE BY THE REALTORS® ASSOCIATION OF

EDMONTON. COPYRIGHT 2025 BY THE REALTORS® ASSOCIATION OF EDMONTON. ALL RIGHTS RESERVED.Trademarks are owned or controlled by the Canadian Real Estate Association (CREA) and identify real estate professionals who are members of CREA (REALTOR®, REALTORS®) and/or the quality of services they provide (MLS®, Multiple Listing Service®)

Listing information last updated on April 23rd, 2025 at 11:17pm MDT