

Courtesy Of Wassim Moustapha Of Sweetly

# \$2,790,000 - 10310 138 Street, Edmonton

MLS® #E4430792

**\$2,790,000**

1 Bedroom, 0.50 Bathroom, 4,880 sqft  
Single Family on 0.00 Acres

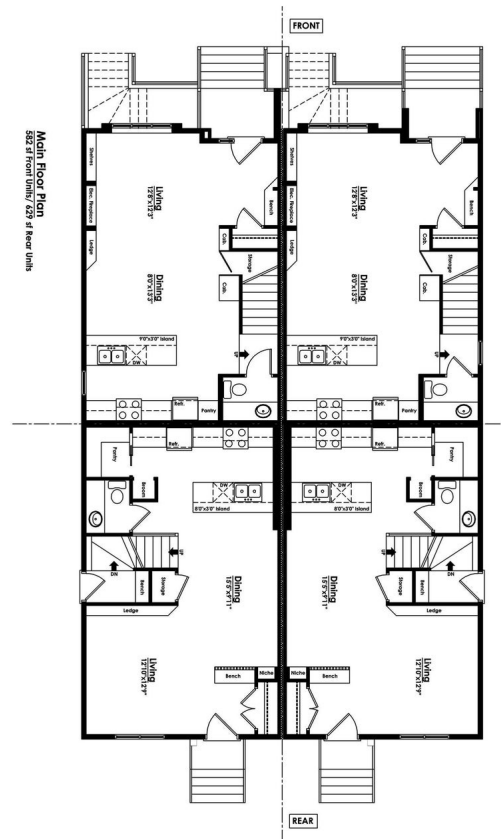
Glenora, Edmonton, AB

The quality and location you would expect when a multi-million-dollar home builder builds a 4 plex. 14 bedrooms. 16 bathrooms. Over 100K in Upgrades, including: Walkout Basement, Upgraded Windows, Commercial grade vinyl flooring, Upgraded tile package, upgraded Appliance's, counter tops and cabinetry, Iron Elements railing, Upgraded Hardy Board exterior and MUCH more! Arguably the most exclusive neighborhood , close to downtown, river valley, premier schools and surrounded by multimillion dollar homes! Proudly built by Varsity Homes. This project qualifies for CMHC MLI select.

Built in 2025

## Essential Information

|                |               |
|----------------|---------------|
| MLS® #         | E4430792      |
| Price          | \$2,790,000   |
| Bedrooms       | 1             |
| Bathrooms      | 0.50          |
| Half Baths     | 1             |
| Square Footage | 4,880         |
| Acres          | 0.00          |
| Year Built     | 2025          |
| Type           | Single Family |
| Sub-Type       | 4PLEX         |
| Style          | 2 Storey      |



Status Active

### Community Information

Address 10310 138 Street  
Area Edmonton  
Subdivision Glenora  
City Edmonton  
County ALBERTA  
Province AB  
Postal Code T5N 2J3

### Amenities

Amenities See Remarks  
Parking See Remarks

### Interior

Appliances Dishwasher-Built-In, Dryer, Oven-Microwave, Refrigerator,  
Stove-Electric, Washer  
Heating Forced Air-1, Natural Gas  
Stories 3  
Has Suite Yes  
Has Basement Yes  
Basement Full, Finished

### Exterior

Exterior Wood, Fiber Cement  
Exterior Features See Remarks  
Roof Asphalt Shingles  
Construction Wood, Fiber Cement  
Foundation Concrete Perimeter

### Additional Information

Date Listed April 14th, 2025  
Days on Market 9  
Zoning Zone 11

DATA IS DEEMED RELIABLE BUT IS NOT GUARANTEED ACCURATE BY THE REALTORS® ASSOCIATION OF EDMONTON. COPYRIGHT 2025 BY THE REALTORS® ASSOCIATION OF EDMONTON. ALL RIGHTS RESERVED. Trademarks are owned or controlled by the Canadian Real Estate Association (CREA) and identify real estate professionals who are members of CREA (REALTOR®, REALTORS®) and/or the quality of services they provide (MLS®, Multiple Listing Service®)

Listing information last updated on April 23rd, 2025 at 4:32pm MDT