

Courtesy Of Jocelyn White and Dan C Chalifoux Of Real Broker

\$474,900 - 56 Waverly Way, Fort Saskatchewan

MLS® #E4430350

\$474,900

3 Bedroom, 2.50 Bathroom, 1,783 sqft

Single Family on 0.00 Acres

Westpark_FSAS, Fort Saskatchewan, AB

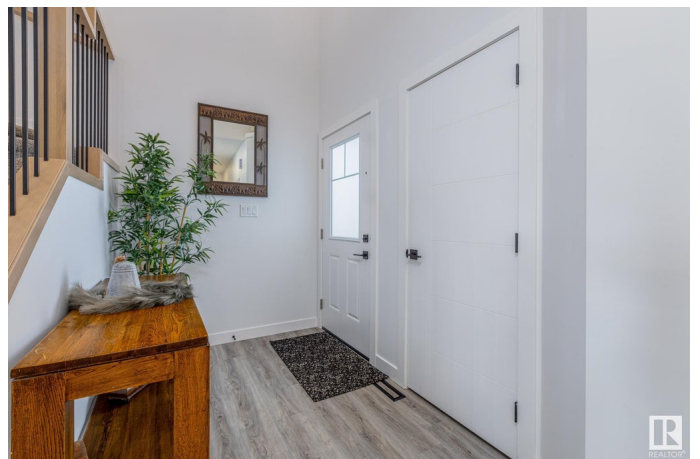
NO BACK NEIGHBOURS at this over 1700 sq/ft half duplex in Fort Saskatchewan that feels anything but attached! You're greeted by soaring ceilings with an OPEN TO BELOW foyer entrance that sets the tone for the grand space that awaits. The spacious design ensures every corner of this home feels inviting. At heart of the home find a gorgeous, two-toned kitchen with plenty of room for seating and hosting. The dining area flows seamlessly to an upper-level deck, offering views of the GREEN SPACE. Step down the stairs to a second ground-level deck and a freshly poured concrete pad – the perfect spot for a hot tub! Upstairs, you'll find a large bonus room filled with natural light and double french doors that lead you into the impressive primary bedroom complete with a 3-piece ensuite and a walk-in closet. Two additional spacious bedrooms and a 4-piece bathroom complete the upper level. The basement offers endless future possibilities with its 9foot ceilings and a separate entrance, ready for you to transform.

Built in 2023

Essential Information

MLS® # E4430350

Price \$474,900



Bedrooms	3
Bathrooms	2.50
Full Baths	2
Half Baths	1
Square Footage	1,783
Acres	0.00
Year Built	2023
Type	Single Family
Sub-Type	Half Duplex
Style	2 Storey
Status	Active

Community Information

Address	56 Waverly Way
Area	Fort Saskatchewan
Subdivision	Westpark_FSAS
City	Fort Saskatchewan
County	ALBERTA
Province	AB
Postal Code	T8L 0Z8

Amenities

Amenities	Carbon Monoxide Detectors
Parking	Double Garage Attached

Interior

Interior Features	ensuite bathroom
Appliances	Dishwasher-Built-In, Garage Control, Garage Opener, Hood Fan, Oven-Built-In, Refrigerator, Stove-Electric, TV Wall Mount
Heating	Forced Air-1, Natural Gas
Fireplace	Yes
Fireplaces	Marble Surround
Stories	2
Has Basement	Yes
Basement	Full, Unfinished

Exterior

Exterior	Wood, Stone, Vinyl
Exterior Features	Backs Onto Park/Trees, Environmental Reserve, Low Maintenance

Landscape, No Back Lane, Shopping Nearby, Partially Fenced

Roof Asphalt Shingles
Construction Wood, Stone, Vinyl
Foundation Concrete Perimeter

School Information

Elementary JAMES MOWAT EL
Middle RUDOLPH HENNIG
High FT SASK HIGH

Additional Information

Date Listed April 11th, 2025
Days on Market 11
Zoning Zone 62

DATA IS DEEMED RELIABLE BUT IS NOT GUARANTEED ACCURATE BY THE REALTORS® ASSOCIATION OF EDMONTON. COPYRIGHT 2025 BY THE REALTORS® ASSOCIATION OF EDMONTON. ALL RIGHTS RESERVED. Trademarks are owned or controlled by the Canadian Real Estate Association (CREA) and identify real estate professionals who are members of CREA (REALTOR®, REALTORS®) and/or the quality of services they provide (MLS®, Multiple Listing Service®)

Listing information last updated on April 22nd, 2025 at 12:47pm MDT