

\$549,900 - 7 Pineridge Crescent, St. Albert

MLS® #E4429021

\$549,900

4 Bedroom, 3.00 Bathroom, 1,713 sqft
Single Family on 0.00 Acres

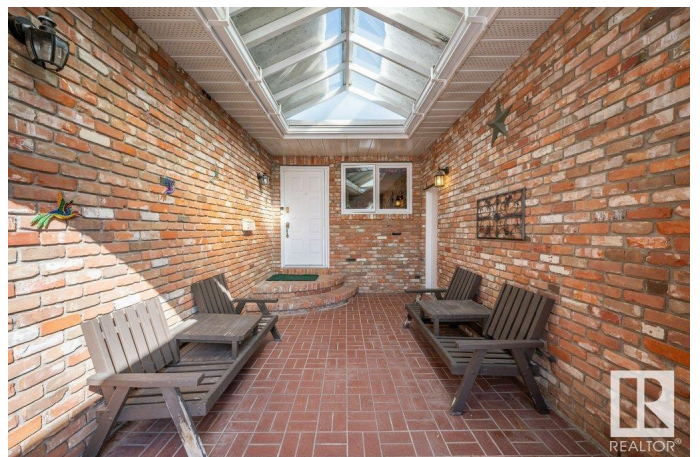
Pineview, St. Albert, AB

This 1,700+ SqFt Ken Payne-built bungalow in Pineview is perfect for a growing family! Tucked away on a quiet crescent with quick Henday access, it offers convenience and comfort. The main floor has plenty of space to gather, with a formal living & dining room, plus a spacious kitchen that opens to a cozy sunken family room with a beautiful brick gas fireplace. The private backyard is a dream—professionally landscaped, filled with mature trees, and complete with an underground sprinkler system. Recent updates include a newer roof, front eaves, and garage door, as well as plumbing upgrades under the sinks. With 3 bedrooms upstairs and 1 in the fully finished basement, there's room for everyone to spread out and enjoy. Located on a friendly, mature street, this home is ready for your family to make lasting memories!

Built in 1980

Essential Information

MLS® #	E4429021
Price	\$549,900
Bedrooms	4
Bathrooms	3.00
Full Baths	3
Square Footage	1,713
Acres	0.00



Year Built	1980
Type	Single Family
Sub-Type	Detached Single Family
Style	Bungalow
Status	Active

Community Information

Address	7 Pineridge Crescent
Area	St. Albert
Subdivision	Pineview
City	St. Albert
County	ALBERTA
Province	AB
Postal Code	T8N 4P3

Amenities

Amenities	Deck, Fire Pit, Patio, Sauna; Swirlpool; Steam, Sprinkler Sys-Underground
Parking	Double Garage Attached

Interior

Interior Features	ensuite bathroom
Appliances	Dishwasher-Built-In, Dryer, Garage Control, Garage Opener, Garburator, Microwave Hood Fan, Refrigerator, Storage Shed, Stove-Electric, Vacuum System Attachments, Vacuum Systems, Washer, Window Coverings
Heating	Forced Air-2, Natural Gas
Fireplace	Yes
Fireplaces	Brick Facing
Stories	2
Has Basement	Yes
Basement	Full, Finished

Exterior

Exterior	Wood, Brick
Exterior Features	Fenced, Flat Site, Landscaped, Park/Reserve, Playground Nearby, Schools, Shopping Nearby
Roof	Asphalt Shingles
Construction	Wood, Brick
Foundation	Concrete Perimeter

Additional Information

Date Listed April 4th, 2025

Days on Market 17

Zoning Zone 24

DATA IS DEEMED RELIABLE BUT IS NOT GUARANTEED ACCURATE BY THE REALTORS® ASSOCIATION OF EDMONTON. COPYRIGHT 2025 BY THE REALTORS® ASSOCIATION OF EDMONTON. ALL RIGHTS RESERVED. Trademarks are owned or controlled by the Canadian Real Estate Association (CREA) and identify real estate professionals who are members of CREA (REALTOR®, REALTORS®) and/or the quality of services they provide (MLS®, Multiple Listing Service®)

Listing information last updated on April 21st, 2025 at 3:17pm MDT