

\$819,900 - 4523 Saly Place, Edmonton

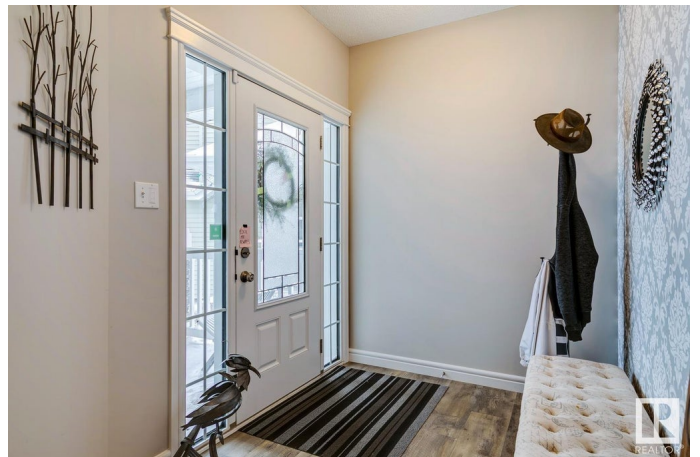
MLS® #E4428884

\$819,900

6 Bedroom, 3.50 Bathroom, 2,628 sqft
Single Family on 0.00 Acres

Summerside, Edmonton, AB

STUNNING 2628 SQUARE FOOT 2 STOREY FEAT. 6 BEDROOMS & 4 BATHS WITH OVER 3700 SQ FT OF COMPLETED LIVING SPACE LOACTED IN HIGHLY SOUGHT AFTER SUMMERSIDE. The main floor is adorned with luxury vinyl plank & feat. a open concept with the kitchen, living room, & dining room all open to each other. The main floor also feat. a den, for those who work from home, along with a walk through pantry. The upper floor feat. 4 Bedrooms, a bonus room, 2-4 piece bathrooms (one of which is the ensuite), & the laundry room. The spacious Master bedroom feat. a spa like 5 piece ensuite along with a spacious walk in closet. The lower level feat. a massive rec room along with the 5th & 6th bedrooms & a additional 4 piece bath. Other upgrades of the meticulously maintained house include: REAR SINGLE GARAGE, \$38,000 solar panel system, automated sprinklers, air conditioning, HRV system, epoxied garage floors in both garages, composite deck, water softener, finished & heated double garage, coffered ceilings, & so much more.



Built in 2016

Essential Information

MLS® #	E4428884
Price	\$819,900

Bedrooms	6
Bathrooms	3.50
Full Baths	3
Half Baths	1
Square Footage	2,628
Acres	0.00
Year Built	2016
Type	Single Family
Sub-Type	Detached Single Family
Style	2 Storey
Status	Active

Community Information

Address	4523 Saly Place
Area	Edmonton
Subdivision	Summerside
City	Edmonton
County	ALBERTA
Province	AB
Postal Code	T6X 2C7

Amenities

Amenities	Carbon Monoxide Detectors, Ceiling 9 ft., Deck, Detectors Smoke, Exterior Walls- 2"x6", No Smoking Home, Smart/Program. Thermostat, Vinyl Windows, See Remarks
Parking	Double Garage Attached, Over Sized, Single Garage Detached

Interior

Interior Features	ensuite bathroom
Appliances	Dishwasher-Built-In, Dryer, Garage Opener, Microwave Hood Fan, Refrigerator, Stove-Electric, Washer, Window Coverings
Heating	Forced Air-1, Natural Gas
Fireplace	Yes
Fireplaces	Direct Vent
Stories	3
Has Basement	Yes
Basement	Full, Finished

Exterior

Exterior	Wood, Stone, Vinyl
Exterior Features	Back Lane, Fenced, Flat Site, Golf Nearby, Landscaped, Playground Nearby, Public Transportation, Schools, Shopping Nearby, See Remarks
Roof	Asphalt Shingles
Construction	Wood, Stone, Vinyl
Foundation	Concrete Perimeter

Additional Information

Date Listed	April 3rd, 2025
Days on Market	1
Zoning	Zone 53
HOA Fees	800
HOA Fees Freq.	Annually

DATA IS DEEMED RELIABLE BUT IS NOT GUARANTEED ACCURATE BY THE REALTORS® ASSOCIATION OF EDMONTON. COPYRIGHT 2025 BY THE REALTORS® ASSOCIATION OF EDMONTON. ALL RIGHTS RESERVED. Trademarks are owned or controlled by the Canadian Real Estate Association (CREA) and identify real estate professionals who are members of CREA (REALTOR®, REALTORS®) and/or the quality of services they provide (MLS®, Multiple Listing Service®)

Listing information last updated on April 4th, 2025 at 8:32pm MDT