

# \$335,000 - 204 401 Palisades Way, Sherwood Park

MLS® #E4428737

**\$335,000**

2 Bedroom, 3.00 Bathroom, 1,441 sqft  
Condo / Townhouse on 0.00 Acres

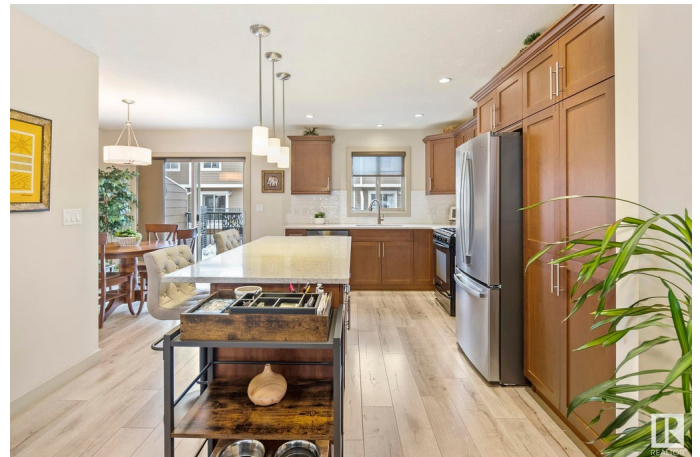
Centennial Village, Sherwood Park, AB

This immaculate end-unit townhouse offers the perfect blend of style, comfort, and convenience. The beautifully updated kitchen features sleek quartz countertops, a stylish new backsplash, and a gas stove, creating a modern and functional space. An open-concept layout flows seamlessly into the living and dining areas, making it ideal for gatherings. Two spacious primary bedrooms, each with a full ensuite, provide ultimate privacy, while the fully finished basement adds extra living space with a fourth washroom. Enjoy the convenience of a double attached garage, front parking, and a huge balcony—perfect for relaxing or entertaining. With central air conditioning for year-round comfort, this home is just steps from Centennial Park and scenic walking trails, close to shopping, dining, and offers a quick commute to major routes. A true 10/10, this home is a must-see!

Built in 2011

## Essential Information

MLS® #	E4428737
Price	\$335,000
Bedrooms	2
Bathrooms	3.00
Full Baths	2



Half Baths	2
Square Footage	1,441
Acres	0.00
Year Built	2011
Type	Condo / Townhouse
Sub-Type	Townhouse
Style	2 Storey
Status	Active

### **Community Information**

Address	204 401 Palisades Way
Area	Sherwood Park
Subdivision	Centennial Village
City	Sherwood Park
County	ALBERTA
Province	AB
Postal Code	T8H 0R7

### **Amenities**

Amenities	Air Conditioner, Deck, Front Porch, No Smoking Home, Parking-Visitor
Parking	Double Garage Attached

### **Interior**

Interior Features	ensuite bathroom
Appliances	Air Conditioning-Central, Dishwasher-Built-In, Dryer, Garage Control, Garage Opener, Microwave Hood Fan, Refrigerator, Stove-Gas, Washer, Window Coverings
Heating	Forced Air-1, Natural Gas
Stories	3
Has Basement	Yes
Basement	Full, Finished

### **Exterior**

Exterior	Wood, Brick, Vinyl
Exterior Features	Picnic Area, Playground Nearby, Public Swimming Pool, Public Transportation, Shopping Nearby
Roof	Asphalt Shingles
Construction	Wood, Brick, Vinyl
Foundation	Concrete Perimeter

## School Information

Elementary	Woodbridge Farms
Middle	Cloverbar
High	Salisbury

## Additional Information

Date Listed	April 3rd, 2025
Days on Market	1
Zoning	Zone 25
Condo Fee	\$486

DATA IS DEEMED RELIABLE BUT IS NOT GUARANTEED ACCURATE BY THE REALTORS® ASSOCIATION OF EDMONTON. COPYRIGHT 2025 BY THE REALTORS® ASSOCIATION OF EDMONTON. ALL RIGHTS RESERVED. Trademarks are owned or controlled by the Canadian Real Estate Association (CREA) and identify real estate professionals who are members of CREA (REALTOR®, REALTORS®) and/or the quality of services they provide (MLS®, Multiple Listing Service®)

Listing information last updated on April 4th, 2025 at 6:17pm MDT