

\$339,702 - 150 230 Edwards Drive, Edmonton

MLS® #E4428574

\$339,702

3 Bedroom, 1.50 Bathroom, 1,100 sqft
Condo / Townhouse on 0.00 Acres

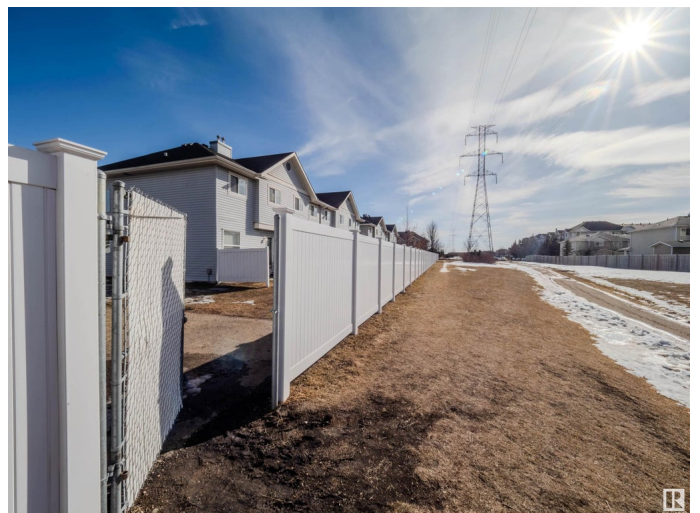
Ellerslie, Edmonton, AB

WOW END UNIT!...NO CARPET ANYWHERE....LOTS OF RECENT UPGRADES....YES IT IS DOUBLE CONCRETE PARKING IN FRONT....BACKING ONTO GREEN SPACE!..DOUBLE DRIVEWAY (I KNOW THAT IS SAID TWICE!! LOL)...FULLY FINISHED BASEMENT...PRIVATE BACKYARD OASIS!...HUGE PRIMARY BEDROOM....~!WELCOME HOME!~
Stoneridge is a great condo complex close to all amenities! Great, functional kitchen with lots of counter space and dining area, open to living room - great for entertaining! Upstairs you will find two spacious bedrooms and 4 pce bath. Double doors lead to the over sized primary bedroom, complete with a large walk in closet. This unit has a fully finished basement for that added living space you are looking for! Enjoy those upcoming outdoor barbecues in the private back yard, backing onto green space. Prepare to be impressed! ~!WELCOME HOME!~

Built in 2003

Essential Information

MLS® #	E4428574
Price	\$339,702
Bedrooms	3



Bathrooms	1.50
Full Baths	1
Half Baths	1
Square Footage	1,100
Acres	0.00
Year Built	2003
Type	Condo / Townhouse
Sub-Type	Townhouse
Style	2 Storey
Status	Active

Community Information

Address	150 230 Edwards Drive
Area	Edmonton
Subdivision	Ellerslie
City	Edmonton
County	ALBERTA
Province	AB
Postal Code	T6X 1G7

Amenities

Amenities	See Remarks
Parking Spaces	3
Parking	Single Garage Attached

Interior

Appliances	Dishwasher-Built-In, Dryer, Garage Control, Garage Opener, Microwave Hood Fan, Refrigerator, Stove-Electric, Washer
Heating	Forced Air-1, Natural Gas
Stories	3
Has Basement	Yes
Basement	Full, Finished

Exterior

Exterior	Wood, Stone, Vinyl
Exterior Features	Playground Nearby, Public Transportation, Schools, Shopping Nearby
Roof	Asphalt Shingles
Construction	Wood, Stone, Vinyl
Foundation	Concrete Perimeter

Additional Information

Date Listed	April 2nd, 2025
Days on Market	2
Zoning	Zone 53
Condo Fee	\$335

DATA IS DEEMED RELIABLE BUT IS NOT GUARANTEED ACCURATE BY THE REALTORS® ASSOCIATION OF EDMONTON. COPYRIGHT 2025 BY THE REALTORS® ASSOCIATION OF EDMONTON. ALL RIGHTS RESERVED. Trademarks are owned or controlled by the Canadian Real Estate Association (CREA) and identify real estate professionals who are members of CREA (REALTOR®, REALTORS®) and/or the quality of services they provide (MLS®, Multiple Listing Service®)

Listing information last updated on April 4th, 2025 at 3:32pm MDT