

# \$555,810 - 5100 Parc Runis Way, Beaumont

MLS® #E4428127

**\$555,810**

3 Bedroom, 2.50 Bathroom, 1,703 sqft  
Single Family on 0.00 Acres

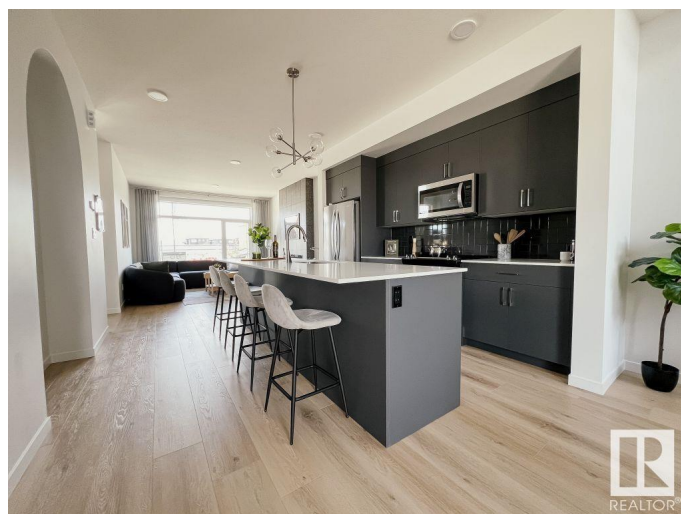
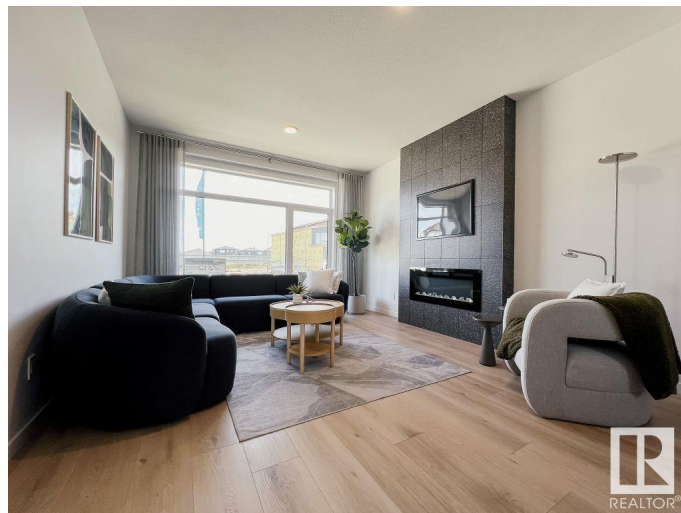
Elan, Beaumont, AB

Welcome to the stunning Versa Nixon 20, a laned home that perfectly blends functionality and modern design. The main floor features a versatile den – ideal for a home office, playroom, or guest space – offering flexibility to suit your lifestyle needs. Upstairs you will find a spacious bonus room perfect for family movie nights or play area or additional living space. The open concept main floor is bright and inviting, with thoughtful finishes throughout. **UNDER CONSTRUCTION!**  
\*photos are for representation only. Colors and finishings may vary\*

Built in 2025

## Essential Information

MLS® #	E4428127
Price	\$555,810
Bedrooms	3
Bathrooms	2.50
Full Baths	2
Half Baths	1
Square Footage	1,703
Acres	0.00
Year Built	2025
Type	Single Family
Sub-Type	Detached Single Family
Style	2 Storey



Status Active

### Community Information

Address 5100 Parc Runis Way  
Area Beaumont  
Subdivision Elan  
City Beaumont  
County ALBERTA  
Province AB  
Postal Code T4X 3E4

### Amenities

Amenities Deck, Front Porch, See Remarks  
Parking Parking Pad Cement/Paved

### Interior

Interior Features ensuite bathroom  
Appliances Dishwasher-Built-In, Microwave Hood Fan, Refrigerator, Stove-Electric  
Heating Forced Air-1, Natural Gas  
Fireplace Yes  
Fireplaces Insert  
Stories 2  
Has Basement Yes  
Basement Full, Unfinished

### Exterior

Exterior Wood, Vinyl  
Exterior Features Schools, See Remarks  
Roof Asphalt Shingles  
Construction Wood, Vinyl  
Foundation Concrete Perimeter

### School Information

Elementary École Bellevue School  
Middle École Dansereau Meadows  
High École Secondaire Beaumont

### Additional Information

Date Listed March 25th, 2025

Days on Market 16

Zoning Zone 82

DATA IS DEEMED RELIABLE BUT IS NOT GUARANTEED ACCURATE BY THE REALTORS® ASSOCIATION OF EDMONTON. COPYRIGHT 2025 BY THE REALTORS® ASSOCIATION OF EDMONTON. ALL RIGHTS RESERVED. Trademarks are owned or controlled by the Canadian Real Estate Association (CREA) and identify real estate professionals who are members of CREA (REALTOR®, REALTORS®) and/or the quality of services they provide (MLS®, Multiple Listing Service®)

Listing information last updated on April 10th, 2025 at 10:18am MDT