

## \$599,900 - 8 Everwood Close, St. Albert

---

MLS® #E4426430

**\$599,900**

5 Bedroom, 3.50 Bathroom, 1,747 sqft

Single Family on 0.00 Acres

Erin Ridge, St. Albert, AB

A rare find—this 5-bedroom, 2-storey home is tucked away on a quiet cul-de-sac in Erin Ridge, making it ideal for a large or growing family. Recently updated with a new roof and vinyl plank flooring on the second level (no carpet), the property offers modern comfort and style. On the main floor, you'll enjoy large windows, an open-concept living area with a gas fireplace, and a bright, spacious kitchen featuring an island, granite countertops, stainless steel appliances, and a large pantry. Garden doors off the dinette lead to a fully fenced backyard with a freshly painted deck. A 2-piece bath and laundry room complete this level. Upstairs, four generous bedrooms await, alongside a 3-piece bath and a 4-piece ensuite in the primary bedroom, which includes a big walk-in closet. The fully finished basement provides a fifth bedroom, a huge recreation room, a 3-piece bath, and storage space. Conveniently located near walking trails, schools, and amenities, this home is ready to welcome you!

Built in 2003

### Essential Information

|          |           |
|----------|-----------|
| MLS® #   | E4426430  |
| Price    | \$599,900 |
| Bedrooms | 5         |



|                |                        |
|----------------|------------------------|
| Bathrooms      | 3.50                   |
| Full Baths     | 3                      |
| Half Baths     | 1                      |
| Square Footage | 1,747                  |
| Acres          | 0.00                   |
| Year Built     | 2003                   |
| Type           | Single Family          |
| Sub-Type       | Detached Single Family |
| Style          | 2 Storey               |
| Status         | Active                 |

### Community Information

|             |                  |
|-------------|------------------|
| Address     | 8 Everwood Close |
| Area        | St. Albert       |
| Subdivision | Erin Ridge       |
| City        | St. Albert       |
| County      | ALBERTA          |
| Province    | AB               |
| Postal Code | T8N 7H1          |

### Amenities

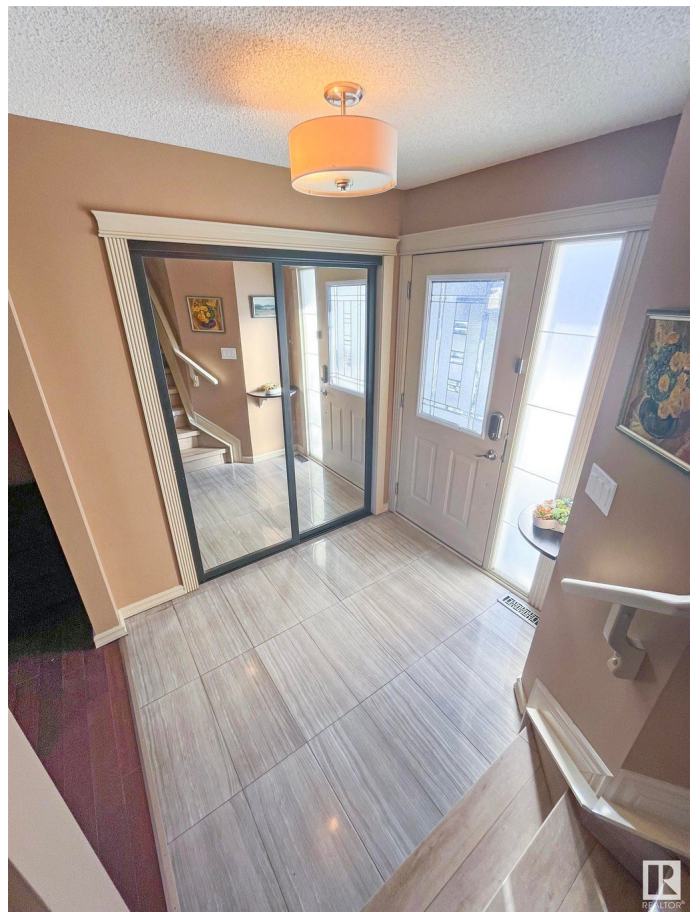
|           |                        |
|-----------|------------------------|
| Amenities | Deck, Wet Bar          |
| Parking   | Double Garage Attached |

### Interior

|                   |  |
|-------------------|--|
| Interior Features | ensuite bathroom   |
| Appliances        | Dishwasher-Built-In, Dryer, G<br>Hood Fan, Refrigerator, Stor<br>Coverings |
| Heating           | Forced Air-1, Natural Gas  |
| Stories           | 3  |
| Has Basement      | Yes  |
| Basement          | Full, Finished   |

### Exterior

|                   |                   |
|-------------------|-------------------|
| Exterior          | Wood, Vinyl       |
| Exterior Features | Fenced, Flat Site |
| Roof              | Asphalt Shingles  |
| Construction      | Wood, Vinyl       |



Foundation                      Concrete Perimeter

**Additional Information**

Date Listed                      March 19th, 2025  
Days on Market                33  
Zoning                              Zone 24

DATA IS DEEMED RELIABLE BUT IS NOT GUARANTEED ACCURATE BY THE REALTORS® ASSOCIATION OF EDMONTON. COPYRIGHT 2025 BY THE REALTORS® ASSOCIATION OF EDMONTON. ALL RIGHTS RESERVED.Trademarks are owned or controlled by the Canadian Real Estate Association (CREA) and identify real estate professionals who are members of CREA (REALTOR®, REALTORS®) and/or the quality of services they provide (MLS®, Multiple Listing Service®)  
Listing information last updated on April 21st, 2025 at 2:32am MDT