

\$159,900 - 122 10511 42 Avenue, Edmonton

MLS® #E4423320

\$159,900

1 Bedroom, 1.00 Bathroom, 763 sqft

Condo / Townhouse on 0.00 Acres

Rideau Park (Edmonton), Edmonton, AB

Terrific value in this well-maintained one bedroom condo in Rideau Park. This inviting main floor unit has a private patio with lovely views of trees & greenery. A tiled entrance leads to the bright open kitchen with eating bar, newer vinyl plank flooring, an abundance of cabinets & floor to ceiling pantry. Massive combined living/dining room with plenty of space for entertaining. The bedroom is a great size & next to the 4-piece bath with newer plank flooring. Large in-suite storage room with newer stackable washer & dryer & a durable metal shelving system. Condo is wired for security, there's natural gas BBQ hook-up on the patio & 1 titled heated underground parking stall with storage cage. Great location with easy access to transit, Southgate LRT, major roadways, U of A campus & hospital. Walking distance to shops, restaurants & services of Whitemud Crossing & a public library. Southgate mall is blocks away. Building amenities include two social rooms, exercise room & ample visitor parking.

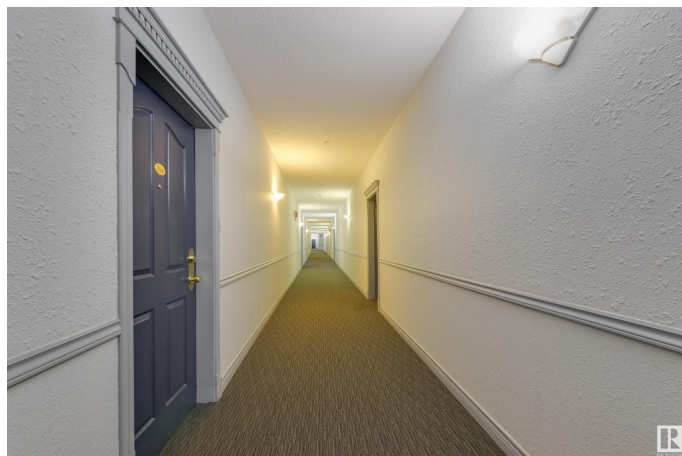
Built in 1998

Essential Information

MLS® # E4423320

Price \$159,900

Bedrooms 1



Bathrooms	1.00
Full Baths	1
Square Footage	763
Acres	0.00
Year Built	1998
Type	Condo / Townhouse
Sub-Type	Lowrise Apartment
Style	Single Level Apartment
Status	Active

Community Information

Address	122 10511 42 Avenue
Area	Edmonton
Subdivision	Rideau Park (Edmonton)
City	Edmonton
County	ALBERTA
Province	AB
Postal Code	T6J 7G8

Amenities

Amenities	Detectors Smoke, Exercise Room, No Smoking Home, Social Rooms, Storage Cage
Parking Spaces	1
Parking	Heated, Underground

Interior

Appliances	Dishwasher-Built-In, Hood Fan, Oven-Microwave, Refrigerator, Stacked Washer/Dryer, Stove-Electric, Window Coverings, See Remarks
Heating	Baseboard, Natural Gas
# of Stories	4
Stories	1
Has Basement	Yes
Basement	None, No Basement

Exterior

Exterior	Wood, Stucco
Exterior Features	Flat Site, Landscaped, Public Transportation, Schools, Shopping Nearby
Roof	Asphalt Shingles
Construction	Wood, Stucco

Foundation Concrete Perimeter

Additional Information

Date Listed February 27th, 2025
Days on Market 50
Zoning Zone 16
Condo Fee \$497

DATA IS DEEMED RELIABLE BUT IS NOT GUARANTEED ACCURATE BY THE REALTORS® ASSOCIATION OF EDMONTON. COPYRIGHT 2025 BY THE REALTORS® ASSOCIATION OF EDMONTON. ALL RIGHTS RESERVED.Trademarks are owned or controlled by the Canadian Real Estate Association (CREA) and identify real estate professionals who are members of CREA (REALTOR®, REALTORS®) and/or the quality of services they provide (MLS®, Multiple Listing Service®)
Listing information last updated on April 18th, 2025 at 7:17pm MDT