

Courtesy Of Rejo Mathew Of MaxWell Progressive

\$484,900 - 16104 100 Street, Edmonton

MLS® #E4423264

\$484,900

3 Bedroom, 2.50 Bathroom, 1,549 sqft

Single Family on 0.00 Acres

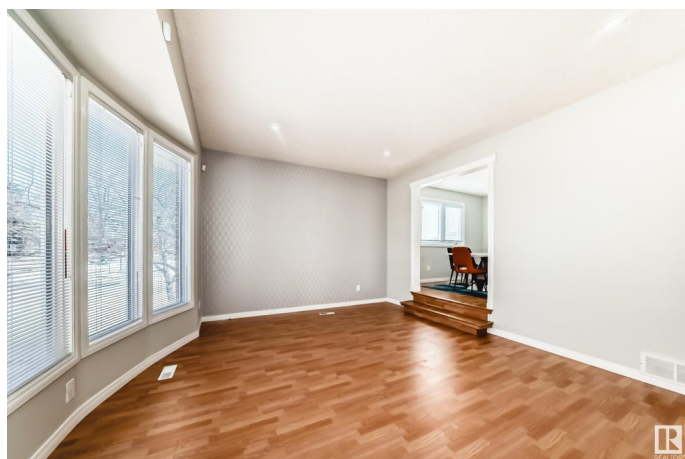
Lorelei, Edmonton, AB

Welcome to Lorelei ! This fabulous, renovated bungalow offers over 2500 sqft living area. The main floor features a large formal living room, dining area, renovated kitchen with all high end appliances, family room with a cozy wood burning fire place, spacious primary bedroom with 3 pc ensuite, two other bedrooms, common bath and laundry area. The lower level has a living room, office area which could easily be converted to a bedroom and a large rec area, bar, bonus room and a half bath. There are plenty of storage space as well in the basement. Recent upgrades include 22x24 garage with 220V line (faster charge for EVs) and gas connection for future heater, all appliances, wall papers, paint and many more. The fully fenced and landscaped private backyard has a covered patio, gazebo and ideal to enjoy the summer evenings. This gorgeous home is conveniently located to public transportation, schools, shopping and Anthony Henday. IMMEDIATE POSSESSION AVAILABLE

Built in 1979

Essential Information

MLS® #	E4423264
Price	\$484,900
Bedrooms	3



Bathrooms	2.50
Full Baths	2
Half Baths	1
Square Footage	1,549
Acres	0.00
Year Built	1979
Type	Single Family
Sub-Type	Detached Single Family
Style	Bungalow
Status	Active

Community Information

Address	16104 100 Street
Area	Edmonton
Subdivision	Lorelei
City	Edmonton
County	ALBERTA
Province	AB
Postal Code	T5X 4R7

Amenities

Amenities	Detectors Smoke, No Animal Home, No Smoking Home
Parking	Double Garage Detached

Interior

Interior Features	ensuite bathroom
Appliances	Dishwasher-Built-In, Dryer, Garage Opener, Stove-Gas, Washer, Window Coverings, Refrigerators-Two
Heating	Forced Air-1, Natural Gas
Fireplace	Yes
Fireplaces	Brick Facing
Stories	2
Has Basement	Yes
Basement	Full, Finished

Exterior

Exterior	Wood, Brick, Vinyl
Exterior Features	Corner Lot, Fenced, Landscaped, Playground Nearby, Public Transportation, Schools, Shopping Nearby

Roof	Asphalt Shingles
Construction	Wood, Brick, Vinyl
Foundation	Concrete Perimeter

School Information

Elementary	Lorelei School
Middle	Mary Butterworth Jr. High
High	Mary Butterworth Jr. High

Additional Information

Date Listed	February 28th, 2025
Days on Market	37
Zoning	Zone 27

DATA IS DEEMED RELIABLE BUT IS NOT GUARANTEED ACCURATE BY THE REALTORS® ASSOCIATION OF EDMONTON. COPYRIGHT 2025 BY THE REALTORS® ASSOCIATION OF EDMONTON. ALL RIGHTS RESERVED. Trademarks are owned or controlled by the Canadian Real Estate Association (CREA) and identify real estate professionals who are members of CREA (REALTOR®, REALTORS®) and/or the quality of services they provide (MLS®, Multiple Listing Service®)

Listing information last updated on April 6th, 2025 at 11:02am MDT